

# Project Concept Notes 2026



#TOGETHERWECAN

## INTRODUCTION

JANADHARE TRUST is a Not for profit Organization enabling and encouraging our partners to leave a positive mark for the future through their contribution towards uplifting and improving the quality of living among the Urban Backward and Rural Communities.

We work from the grassroot level to design and implement sustainable projects with leading Corporate Companies (CSR), Section 8 companies, and other aided organizations, under [Schedule VII of Companies Act, 2013](#) and grants.

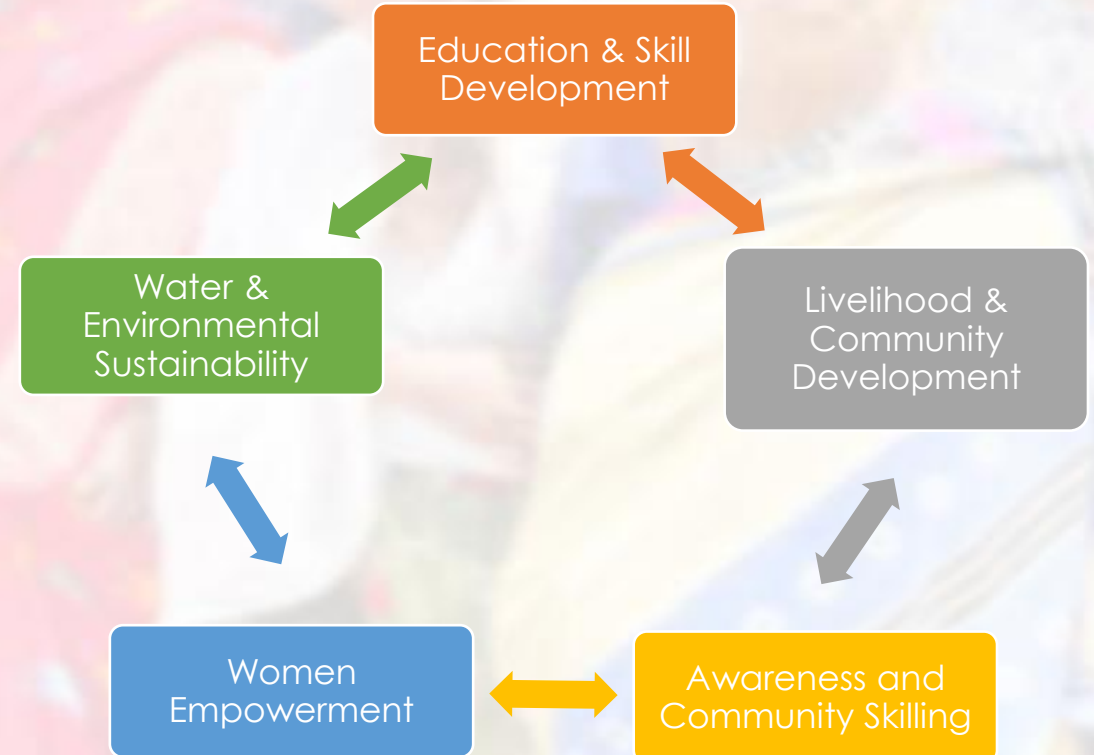
We are a 80G, 12AA and CSR-1 registered organization, with operations in 7 states of India, impacting over 1 lakh lives every year through our programs. Our core focus areas being Access to community, Education and Awareness .



## Project Concept Note Listed

1	Solar Street Lights and Solar House Grids	Page 3-7
2	<b>SHIKSHA FOR ALL</b> – Future Ready Education Program	Page 8
3	<b>E-Play</b> (Empower through Sports)	Page 9-10
4	<b>L.E.A.P</b> (Holistic Skill Development Program)	Page 11-12
5	Tree Saplings Plantation Drives	Page 13
6	Contact	Page 14

## Key Impact Areas





## Solar Street Lights Installation – Project

Aligned to SDG 7-Affordable and Clean Energy, SDG 11-Sustainable Cities and Communities, SDG 13-Climate Action

Solar street lights provide sustainable and reliable lighting in rural and semi-urban communities where grid connectivity is limited or unreliable. By using renewable solar energy, they reduce carbon emissions and support India's clean energy goals. Installation of solar lights improves safety, mobility, and economic activity in villages, especially for women and children after dark. Supporting solar street lighting enables companies to create measurable environmental and social impact while strengthening community infrastructure.

### Project Impact and Reach since 2023



785 Street Lights installed in 35 Villages | 120+ Home Solar Kits | 6 villages supported in Solar Systems.



30,000 families approximately benefited through the initiative | 62% Women and Child beneficiaries.



The installation covered nearly 43 running kilometers in all villages included



97% of the service and maintenance calls were responded and attended within 24 hours



The panchayats neutralized nearly 85% of the use and installation of electric street lights, saving the cost of electricity bills and installation cost for the panchayats. In return using the funds for other progressive work in the villages

## Product Specifications

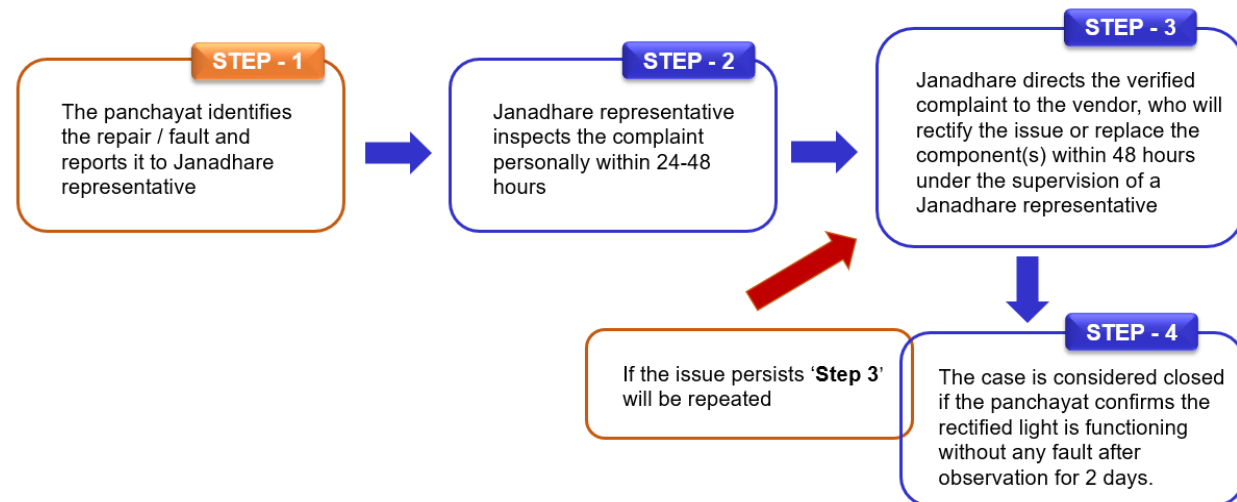
Janadhare provides state of the art equipment and lights that are currently popular in the market, we work with experienced professionals and vendors to ensure maximum benefit.



## Annual Maintenance Contract (AMC)

- 3 years of maintenance will be provided for the street lights
- AMC services will cover solar panels and the complete system
- Physical damage or theft will not be covered

## AMC Cycle – with Panchayats



## Beneficiaries

Jandahare focuses on providing sustainable solutions for safety and accessibility for all sectors of the community, the project is recommended for but not limited to under developed communities, the project not only emphasizes on safety and accessibility to the community but also provides reasonable saving in expenditure to the communities and most importantly provides a sustainable and eco friendly solution.

Rural Communities | Semi urban | Tribal and marginalized communities | Forest Areas and Settlements | Highways and Industrial Areas

## Implementation Methodology

### Baseline Assessment

Conduct a field survey with the village panchayat and community members to identify dark spots, priority locations, and the number of lights required.



### Community Engagement and MOUs

Orient local stakeholders on the purpose, usage, and basic maintenance of the solar street lights to encourage community ownership through MOU.



### Procurement and Installation

Source high-quality solar street light from certified vendors ensuring compliance with standards recommended by the Ministry of New and Renewable Energy.



### Monitoring & Maintenance

Conduct periodic inspections and maintenance to ensure long-term functionality, along with reporting and impact documentation for CSR partners.



### Reporting and Impact Assessment

Geo tagged locations, Real time photos, Digital Reporting for 3 years

## Deliverables

- Implementation capacity of 10,000 lights across locations in India annually.
- **Co-branding and visibility opportunities:** Corporate partners will receive brand visibility through project signage, impact reports, and communication materials highlighting their CSR contribution to community development.
- **Reporting:** Project Videos, Community Testimonials, Acknowledgement letters from governing bodies, highlighting the impact of the project.
- Community awareness and capacity building

## Project Budget

Project Cost inclusive of all project components

- Need Assessment, Survey
- Installation of Street Lights
- 3 Years Annual Maintenance
- Project Reporting and Impact Assessment



## RENEWABLE SOLAR ENERGY PROJECTS – Implemented by Janadhare Trust



### SOLAR EMPOWERED HOMES

Janadhare Trust supports households in underserved communities by enabling access to sustainable solar-powered home lighting solutions. The initiative helps families move away from unreliable or unsafe energy sources while promoting clean and renewable energy adoption. The project serves in areas where there is very limited or no source of electricity.



### SOLAR SMART SCHOOLS

Janadhare promotes clean energy adoption in educational institutions by enabling solar-powered infrastructure in schools. The initiative reduces energy costs while creating awareness among students about renewable energy and sustainable living.

**The project supports – Schools, Colleges, STEM Labs, Community Welfare Centers.**



### AGRITECH SOLAR APPROACH

Janadhare enables access to solar-powered solutions for irrigation and farming operations.

Our initiatives also support communities in solar powered water supply and lighting. The initiative promotes sustainable agriculture while reducing energy costs and dependence on conventional power sources.

**Recent initiatives include Temperature - Controlled produce storage facilities.**

# SHIKSHA FOR ALL – Future Ready Education Program

Aligned to SDG 4: Quality Education, SDG 5: Gender Equality, SDG 6: Clean Water & Sanitation

Janadhare delivers a holistic approach to education for children and adolescents aged 3 to 18 years, focusing on both learning outcomes and overall development. Our programs are designed to strengthen schools through comprehensive training and access to quality, future-ready infrastructure. We work closely with institutions to understand grassroots challenges and implement tailored, need-based solutions. By integrating capacity building with infrastructure support, we enable schools to create sustainable and impactful learning environments.

## Flagship Projects



Skills for Success, Today and Tomorrow

**Vocational Skills and  
Personal Development**



**Holistic Sports  
Development Program**



# PROGRAM OVERVIEW

E-Play is a meticulously crafted and comprehensive sports program supported by ENC Sportz, our esteemed service partners with a legacy of nurturing schools in sports excellence since 2011. This innovative initiative seamlessly integrates a structured sports module into the school curriculum, featuring professional trainers, a global curriculum, and age-appropriate props and equipment for each activity. E-Play is dedicated to fostering a culture of health, teamwork, and skill development in the young minds of our schools.



**LEARNING CYCLE WITH E-PLAY**

**ACTIVE START**  
A combined module on WARM UP activities and FUN GAMES

**COURSE 1**

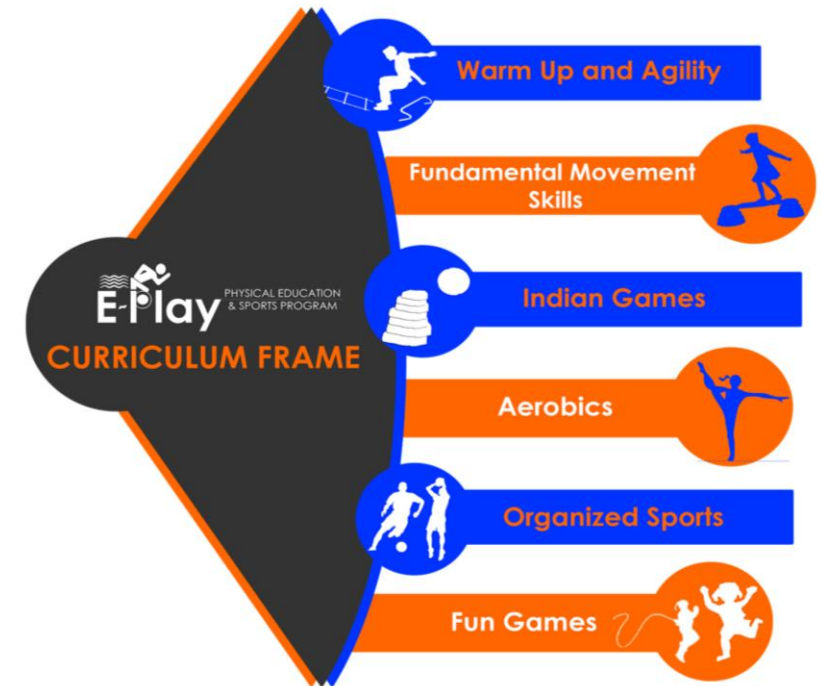
**ATHLETICS & REFLEX**  
Core athletic skills and activities to develop GROSS MOTOR Skills and a balanced physical growth

**COURSE 2**

**ORGANIZED SPORTS & GAMES**  
Introduction to Core Sports, Advanced skill activities, Develop Fine Motor Skills Indian games and strategy

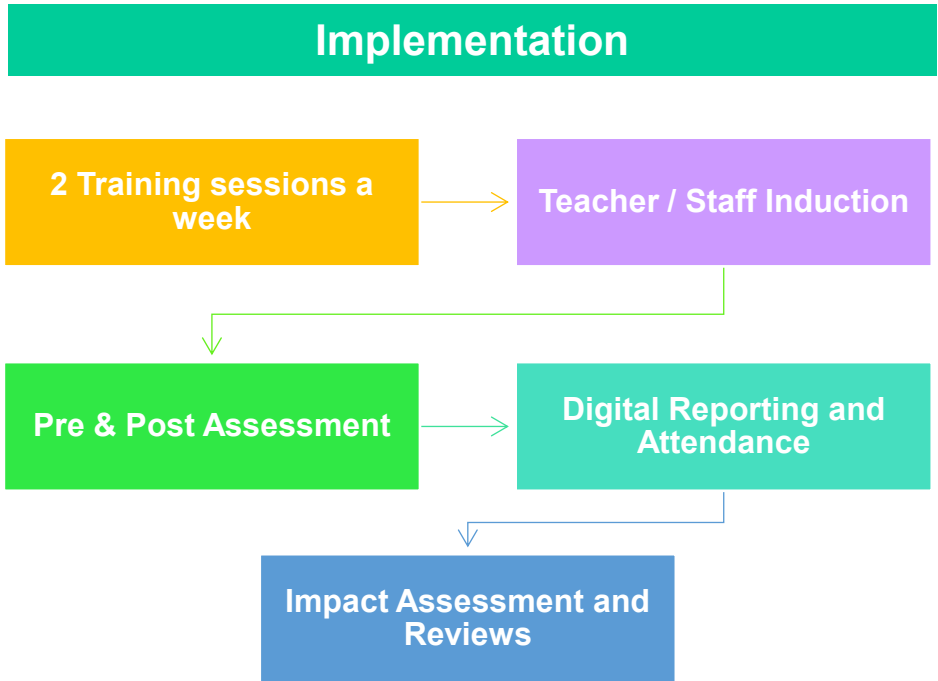
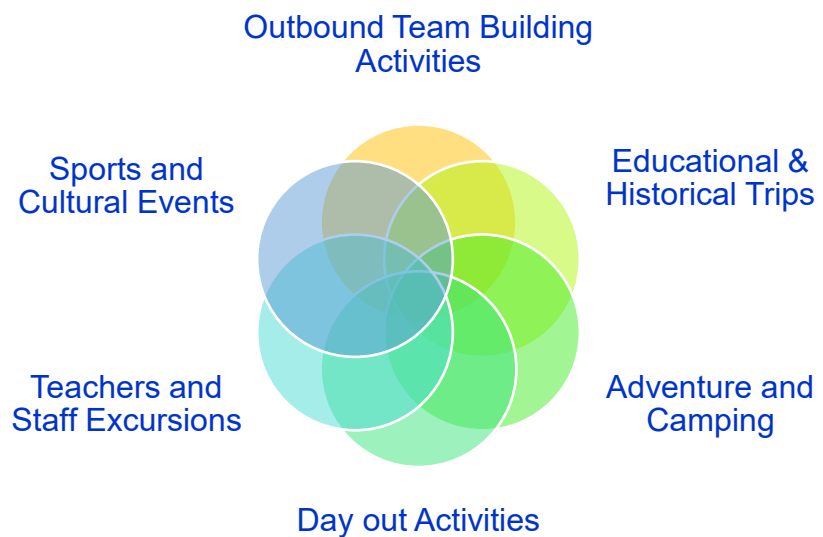
**COURSE 3**

The annual program of E-Play is segmented into 3 portions to ensure all mandatory factors of the child's development through sports is met and also make it interesting.





### S'COOL CAMP – Exposure Program



#### Project Budget

Project cost inclusive of all componenets | *Program adaptable in Anganwadi, Primary & High Schools*

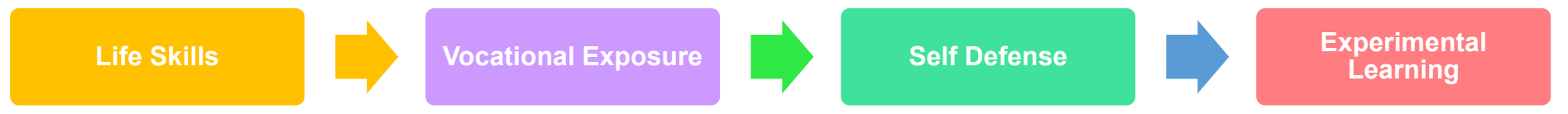
Need Assessment, Survey | Props and Equipment | Professional Trainers & Curriculum | Project Reporting and Impact Assessment



# PERSONALITY BUILDING and LEADERSHIP PROGRAM

The program equips students with essential life skills such as **communication, problem-solving, teamwork, and decision-making** to navigate real-world challenges. Designed for government school ecosystems, it bridges the gap between education and livelihood readiness. Through hands-on activities and mentorship, students are empowered to become self-reliant and make informed career choices. It integrates vocational exposure and practical learning to build confidence, employability, and entrepreneurial thinking.

**CASEL** (Collaborative for Academic, Social, and Emotional Learning) inspired activity-based training modules



## PROGRAM OFFERINGS

- Expert Trainers
- Activity and Interaction Based Learning
- Props and Stationery Inclusive
- Special Attention to Academics / STEM
- Train the Teachers Program
- Community Interaction and Awareness



## CORE ACTIVITIES

- Inter-Personal Skills
- WASH
- Cyber / Road Safety
- HYPE – Monthly Presentation
- Teachers Orientation



## IMPLEMENTATION

- ❖ Integrate a Weekly / Bi-weekly Training Roaster
- ❖ Conduct an induction for teachers to adapt effective teaching methods
- ❖ HYPE – A monthly program to showcase learnings and feedback of the month
- ❖ Co-create activities with existing curriculum of the education board
- ❖ Induct and involve local stake holders to sustain and continue the program
- ❖ Conduct unique awareness programs on road safety, self defense and other topics
- ❖ Identify and bridge the gap in students who need more help to cope with their academics

### LEAP – Grid | SAMPLE

	I	II	III	IV	V	VI	VII	VIII	IX	X
<b>Empowerment</b>	Others & Me	Social Etiquette	Friendship	Relationship Skills	Family Time	Sensitivity	Interpersonal Skills	Adolescence	Group Dynamics	Growing Relationships
<b>Discipline and Character</b>	Visual Skills									
<b>Management</b>	Safety Awareness									
<b>Future Focus</b>	Obedience									
	<b>Seminars, Awareness Programs and Workshops</b>									
<b>Relationship</b>	Understanding the Earth	Nutrition	Environmental Awareness	Water Conservation	Science, Technology and Society	Influence of Media	Creative Careers	City Planning	Coping with Social Issues	Planning My Future
<b>Education</b>									al Etiquette	Peer Pressure
<b>Self Defense</b>									ten English	Spoken English
<b>Community Safety</b>									Bad Touch	Good - Bad Touch
	<b>Seminars, Awareness Programs and Workshops</b>									
<b>Occupational Edge</b>										
						Management		Management	Management	Leadership

### Project Budget

Project cost inclusive of all components

- Need Assessment, Survey
- Props and Training Materials
- Professional Trainers & Curriculum
- Project Reporting and Impact Assessment

*Program adaptable in Anganwadi, primary & High Schools*

## Tree Saplings Plantation Drives

Aligned to SDG 13: Climate Action, SDG 15: Life on Land, SDG 11: Sustainable Cities and Communities, SDG 3: Good Health & Well-being

This project focuses on large-scale tree sapling plantation to enhance green cover and support environmental sustainability. It goes beyond planting by ensuring scientific maintenance practices, including species selection, soil preparation, watering schedules, and survival monitoring. The initiative aims to improve local biodiversity, air quality, and climate resilience in communities. Through structured implementation and care, we ensure higher survival rates and long-term environmental impact.



### “End-to-End Plantation with Scientific Maintenance & Survival Assurance”

14,718 Trees planted and nurtured in 2024 - 25

#### CORE ACTIVITIES

Urban Micro Forests (Miyawaki Model)  
Biodiversity Parks / Eco Zones  
Agroforestry / Farmer-Based Plantation  
Water Body & Lake Buffer Plantation  
Community Land / Panchayat Land Plantation  
Avenue / Road Median Plantation

#### Key features

- Geo-tagging
- Survival tracking (85–90% target)
- Community Ownership

#### Budget:

Project specific pricing. Approx. cost for urban plantation with end-to-end maintenance.

## INTEGRITY AND COMPLIANCE

Ensuring the integrity of our partner companies and organizations is paramount to creating a enduring impact within the community and fostering strong bonds. Janadhare consistently adheres to the regulatory norms of the state or province where we operate. We actively seek collaborations with companies, vendors, and associates who share akin ethical principles concerning labor practices, quality, and the security of personal and professional data.

We value your inquiries, and suggestions.

Please use the following information to get in touch with us

+91 90354 30988 | +91 97427 08283

[projectmanager@janadhare.org](mailto:projectmanager@janadhare.org) | [janadharetrust@gmail.com](mailto:janadharetrust@gmail.com)

[www.janadhare.org](http://www.janadhare.org)

Head Office:

Janadhare Trust, #15 2nd B Main Road,  
St. Thomas Town Post, Kacharkanhalli,  
Bangalore -560084

